

ARTICLE II. ELECTION DISTRICTS PRECINCT BOUNDARIES¹

Sec. 18-26. Apportionment of county into districts, precincts, and polling places.

Pursuant to the authority contained in the Code of Virginia, 1950, as amended, the County of Craig, Virginia, is hereby apportioned into five election districts with the election districts, precincts and polling places as hereby created and established as set forth in this article.

(Ord. No. 01-05, § 1, 6-19-2001; Ord. No. 11-09, § 1, 7-7-2011, No. 04-23)

Sec. 18-27. Establishment of new election districts.

The election districts with populations, according to the most recent United States census, are hereby established as follows:

Craig Creek District	962
Craig City District	967
Potts Mountain District	994
Simmons ville District	1017
New Castle District	952

(Ord. No. 01-05, § 2, 6-19-2001; Ord. No. 11-09, § 2, 7-7-2011, No. 04-23)

Sec. 18-28. Election district boundaries.

The boundaries of the respective election districts are established as follows:

Craig Creek District

Beginning at the junctions Craig Creek (stream) and Johns Creek (stream), follow Craig Creek downstream until its intersection of Cedar Rush Road (Rt. 614), thence follow easterly to the intersection of Camp Easter Seals Road (Rt. 614), thence follow Camp Easter Seals Road easterly to its intersection with Caldwell Mountain Road (Rt. 606), thence follow Caldwell Mountain Road eastwardly to the Craig-Botetourt County boundary at the top of Broad Run Mountain. At this junction, follow the Craig-Botetourt boundary line southwesterly to the junction of the Craig-Botetourt-Roanoke County boundary line, thence continue to follow the Craig-Roanoke County boundary line until it intersects Craig-Roanoke Montgomery County boundary line, then follow the Craig-Montgomery County boundary line to the ridgeline of Sinking Creek Mountain. Follow the Sinking Creek Mountain ridgeline northeasterly to a ridgeline location (Latitude: -80.13984, Longitude: 37.45834), thence follow a straight-line path in a northeasterly direction to the intersection of Cumberland Gap Road (Rt. 42) and Little Mountain Road (Rt. 624). From this intersection, follow Cumberland Gap Road eastwardly to the junction

¹State law reference(s)—District boundaries, Code of Virginia, §§ 24.2-304.1, 24.2-306.

of Meadow Creek (stream), thence follow Meadow Creek downstream until it intersects Craig Creek, thence follow Craig Creek until it meets the junction of Johns Creek, the point of the beginning.

Craig City District

Beginning at the crossing of Johns Creek (stream) and Market Street (Rt. 1004), follow Johns Creek downstream until its intersection with Craig Creek (stream), thence follow Craig Creek downstream to its intersection with Hawkins Lane (Rt. 614), thence follow Hawkins Lane westwardly to the intersection of Craigs Creek Road (Rt. 615), thence follow Craigs Creek Road northerly to the intersection of Peaceful Valley Road (Rt. 611), thence follow Peaceful Valley Road westwardly to its intersection with Paint Bank Road (Rt. 311), thence follow Paint Bank Road eastwardly to the junction of Johns Creek (stream), thence follow Johns Creek downstream until it intersects with Craig Creek (stream), the point of the beginning.

Potts Mountain District

Beginning at a drainage point on Paint Bank Road (Rt. 311) (Latitude: -80.16004, Longitude: 37.49824), follow Paint Bank Road northwesterly to the intersection of Peaceful Valley Road (Rt. 611), thence follow Peaceful Valley Road easterly to the intersection of Craigs Creek Road (Rt. 615), thence follow Craigs Creek Road southerly to the intersection of Hawkins Road (Rt. 614), thence follow Hawkins Road easterly to the junction of Craig Creek (stream), thence follow Craig Creek downstream until its intersection of Cedar Rush Road (Rt. 614), thence follow easterly to the intersection of Camp Easter Seals Road (Rt. 614), thence follow Camp Easter Seals Road easterly to its intersection with Caldwell Mountain Road (Rt. 606), thence follow Caldwell Mountain Road eastwardly to the Craig-Botetourt County boundary at the top of Broad Run Mountain. At this junction, follow the Craig-Botetourt County boundary line northwesterly until it intersects the Craig-Alleghany County boundary line at Fork Mountain ridgeline, thence follow the Craig-Alleghany County boundary line northwesterly to the Potts Mountain ridgeline, thence follow the Craig-Alleghany County boundary line southwesterly along the ridgeline through the Potts Creek valley until it intersects with the Craig-Monroe County (WV) boundary, thence follow the Craig-Monroe County (WV) boundary southwesterly along the ridgeline of Peters Mountain across the Waiteville valley to the Potts Mountain ridgeline, then follow the Potts Mountain ridgeline southwesterly to the Craig-Montgomery County boundary line, thence follow the Craig-Montgomery County boundary line southeasterly to the Johns Creek Mountain ridgeline, thence generally follow the Johns Creek Mountain ridgeline northeasterly to roughly the 2,300 foot elevation line at a location point (Latitude: -80.15044, Longitude: 37.48876) on the middle northern slope of John Creek Mountain, thence follow a straight-line northwesterly path to a stream drainage (Latitude: -80.15733, Longitude: 37.49457) on the lower northern slope of John Creek Mountain, thence a straight-line westwardly path to an adjacent stream drainage (Latitude: -80.15995, Longitude: 37.49453), thence follow stream drainage downstream until it intersects with Paint Bank Road (Rt. 311) (Latitude: -80.16004, Longitude: 37.49824), the point of the beginning.

Simmonsville District

Beginning at the intersection of the Craig-Giles-Montgomery County Boundary lines, follow to ridgeline of Sinking Creek Mountain northeasterly to Craig-Montgomery County Boundary junction, thence continue along the ridgeline northeasterly to a ridgeline location (Latitude: -80.13984, Longitude: 37.45834), thence follow a straight-line path in a northeasterly direction to the intersection of Cumberland Gap Road (Rt. 42) and Little Mountain Road (Rt. 624). From this intersection, follow a straight-line northwesterly path to roughly the 2,300-foot elevation line at a location point (Latitude: -80.15044, Longitude: 37.48876) on the middle northern slope

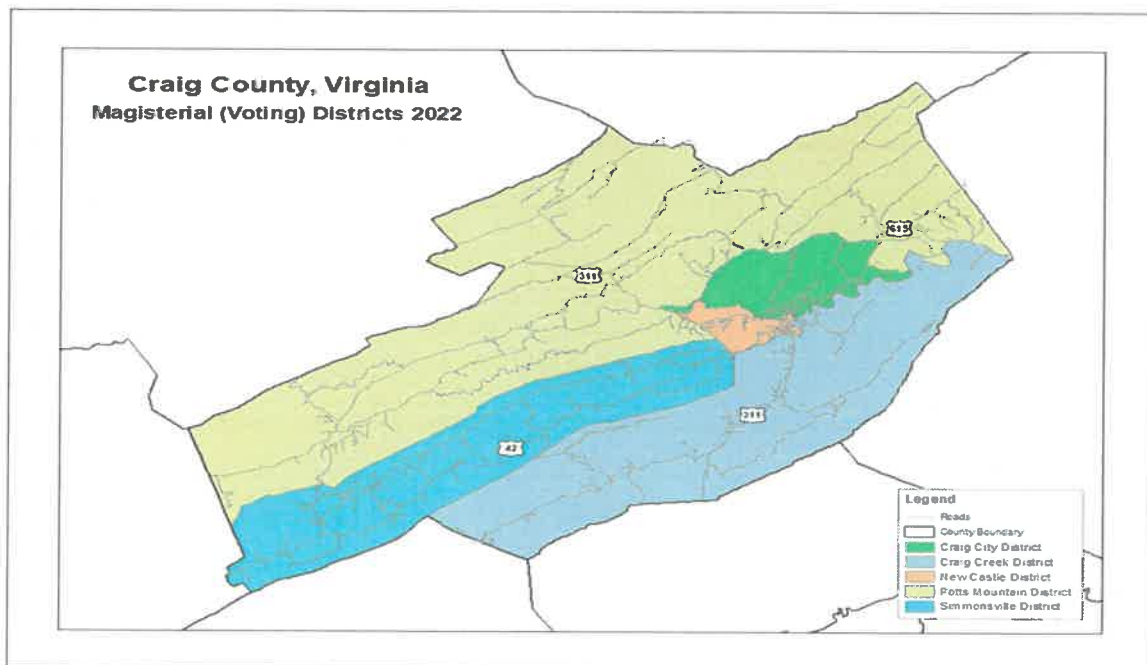
of John Creek Mountain, thence generally follow the Johns Creek Mountain ridgeline southwesterly to the Craig-Montgomery County boundary line, thence follow the Craig-Montgomery County boundary line southerly to the Craig-Giles-Montgomery County Boundary line, the point of the beginning.

New Castle District

Beginning at the crossing of Johns Creek (stream) and Market Street (Rt. 1004), follow Johns Creek downstream until its intersection with Craig Creek (stream), thence follow Craig Creek upstream to the Meadow Creek (stream) junction, thence follow Meadow Creek upstream until it intersects Cumberland Gap Road (Rt. 42), thence follow Cumberland Gap Road westwardly until the intersection of Little Mountain Road (Rt. 624). From this intersection, follow a straight-line northwesterly path to roughly the 2,300 foot elevation line at a location point (Latitude: -80.15044, Longitude: 37.48876) on the middle northern slope of John Creek Mountain, thence follow a straight-line northwesterly path to a stream drainage (Latitude: -80.15733, Longitude: 37.49457) on the lower northern slope of John Creek Mountain, thence a straight-line westwardly path to an adjacent stream drainage (Latitude: -80.15995, Longitude: 37.49453), thence follow stream drainage downstream until it intersects with Paint Bank Road (Rt. 311) (Latitude: -80.16004, Longitude: 37.49824). From this junction, follow Paint Bank Road northwesterly to the junction of Johns Creek (stream), thence follow Johns Creek downstream until the Junction of Market Street (Rt. 1004), the point of the beginning.

Sec. 18-29. District map.

That there is attached to the ordinance from which this article is derived and made a part hereof; a map depicting the election districts as herein established.



(Ord. No. 01-05, § 4, 6-19-2001; Ord. No. 11-09, § 4, 7-7-2011, No. 04-23)

Sec. 18-30. Members of board of supervisors.

One member of the board of supervisors shall be elected from each election district.

(Ord. No. 01-05, § 5, 6-19-2001; Ord. No. 03-06, 4-15-2003; Ord. No. 11-09, § 5, 7-7-2011)

Sec. 18-31. Precinct and polling places.

The precincts for each election district and the polling place for each precinct shall be established as follows:

Precinct	Polling Place
CRAIG CREEK DISTRICT	
Ammendale Precinct	Mountain View Christian Church
SIMMONSVILLE DISTRICT	
Givens and Reynolds Store Precinct	Simmons ville Fire Department
Marshall's Store Precinct	Bethel United Methodist Church
NEW CASTLE DISTRICT	
Court House Precinct	New Castle Fire Department
CRAIG CITY DISTRICT	
Craig City Precinct	Craig County High School
POTTS MOUNTAIN DISTRICT	
Craig Springs Precinct	Craig Springs Christian Church
Paint Bank Precinct	Paint Bank Volunteer Fire Department
Barbours Creek Precinct	Crossroads Church

(Ord. No. 01-05, § 6, 6-19-2001; Ord. No. 02-03, 6-18-2002; Ord. No. 03-03, 4-15-2003; Ord. No. 04-06, 8-2-2004; Ord. of 4-3-2008 §§ 1—3; Ord. No. 09-02, § 1, 2, 4-2-2009; Ord. No. 11-09, § 6, 7-7-2011; Ord. No. 15-04, 7-2-2015; Ord. No. 01-2016, 3-3-2016)

Sec. 18-32. Precinct boundaries.

The boundaries of the respective precincts are as follows:

Ammendale Precinct—Craig Creek District

Beginning at the junctions Craig Creek (stream) and Johns Creek (stream), follow Craig Creek downstream until its intersection of Cedar Rush Road (Rt. 614), thence follow easterly to the intersection of Camp Easter Seals Road (Rt. 614), thence follow Camp Easter Seals Road easterly to its intersection with Caldwell Mountain Road (Rt. 606), thence follow Caldwell Mountain Road eastwardly to the Craig-Botetourt County boundary at the top of Broad Run Mountain. At this junction, follow the Craig-Botetourt boundary line southwesterly to the junction of the Craig-Botetourt-Roanoke County boundary line, thence continue to follow the Craig-Roanoke County boundary line until it intersects Craig-Roanoke Montgomery County boundary line, then follow the Craig-Montgomery County boundary line to the ridgeline of Sinking Creek Mountain. Follow the Sinking Creek Mountain ridgeline northeasterly to a ridgeline location (Latitude: -80.13984, Longitude: 37.45834), thence follow a straight-line path in a northeasterly direction to the intersection of Cumberland Gap Road (Rt. 42) and Little Mountain Road (Rt. 624). From this intersection, follow Cumberland Gap Road eastwardly to the junction

of Meadow Creek (stream), thence follow Meadow Creek downstream until it intersects Craig Creek, thence follow Craig Creek until it meets the junction of Johns Creek, the point of the beginning.

Givens and Reynolds Store Precinct—Simmons ville District

Beginning at the intersection of the Craig-Giles-Montgomery County Boundary lines, follow to ridgeline of Sinking Creek Mountain northeasterly to Craig-Montgomery County Boundary junction, thence continue along the ridgeline northeasterly to a ridgeline location (Latitude: -80.29145, Longitude: 37.3888), thence follow down the north slope of Sinking Creek mountain along a drainage until it intersects Cumberland Gap Road (Rt. 42), thence follow Cumberland Gap Road (Rt. 42) west until the junction of Sinking Spring Hollow (Rt. 641), thence follow along the drainage northwest to the junction of a Sinking Creek (stream), thence follow Sinking Creek upstream to a location in the stream bed (Latitude: -80.31084, Longitude: 37.404337), thence follow path northwesterly up the drainage to the junction of Little Mountain Road (Rt. 624), thence follow Little Mountain Road northeasterly to the junction of Farrier Branch (stream), follow Farrier Branch upstream until intersects with the Simmons ville-Potts Mountain District boundary (generally the Johns Creek Mountain ridgeline), thence follow generally follow the Johns Creek Mountain ridgeline southwesterly to the Craig-Montgomery County boundary line, thence follow the Craig-Montgomery County boundary line southerly to the Craig-Giles-Montgomery County Boundary line, the point of the beginning.

Marshall's Store Precinct—Simmons ville District

At junction of Farrier Branch (stream) on the Johns Creek Mountain ridgeline generally follow the ridgeline northeasterly to roughly the 2,300-foot elevation line at a location point (Latitude: -80.15044, Longitude: 37.48876) on the middle northern slope of John Creek Mountain, thence follow a straight-line path in a southeasterly direction to the intersection of Cumberland Gap Road (Rt. 42) and Little Mountain Road (Rt. 624). From this intersection, follow a straight-line southwesterly path to a ridgeline location (Latitude: -80.13984, Longitude: 37.45834), thence follow the ridgeline southwesterly to a ridgeline location (Latitude: -80.29145, Longitude: 37.3888), thence follow down the north slope of Sinking Creek mountain along a drainage until it intersects Cumberland Gap Road (Rt. 42), thence follow Cumberland Gap Road (Rt. 42) west until the junction of Sinking Spring Hollow (Rt. 641), thence follow along the drainage northwest to the junction of a Sinking Creek (stream), thence follow Sinking Creek upstream to a location in the stream bed (Latitude: -80.31084, Longitude: 37.404337), thence follow path northwesterly up the drainage to the junction of Little Mountain Road (Rt. 624), thence follow Little Mountain Road northeasterly to junction of Farrier Branch (stream), follow Farrier Branch upstream until intersects with the Simmons ville-Potts Mountain District boundary (generally the Johns Creek Mountain ridgeline), the point of the beginning.

Court House Precinct—New Castle District

Beginning at the crossing of Johns Creek (stream) and Market Street (Rt. 1004), follow Johns Creek downstream until its intersection with Craig Creek (stream), thence follow Craig Creek upstream to the Meadow Creek (stream) junction, thence follow Meadow Creek upstream until it intersects Cumberland Gap Road (Rt. 42), thence follow Cumberland Gap Road westwardly until the intersection of Little Mountain Road (Rt. 624). From this intersection, follow a straight-line northwesterly path to roughly the 2,300 foot elevation line at a location point (Latitude: -80.15044, Longitude: 37.48876) on the middle northern slope of John Creek Mountain, thence follow a straight-line northwesterly path to a stream drainage (Latitude: -80.15733, Longitude: 37.49457) on the lower northern slope of John Creek Mountain, thence a straight-line westwardly path to an adjacent stream drainage (Latitude: -80.15995, Longitude: 37.49453), thence follow stream drainage downstream until it intersects with Paint Bank Road (Rt. 311) (Latitude: -80.16004, Longitude: 37.49824). From this junction, follow Paint Bank Road

northwesterly to the junction of Johns Creek (stream), thence follow Johns Creek downstream until the Junction of Market Street (Rt. 1004), the point of the beginning.

Craig City Precinct—Craig City District

Beginning at the crossing of Johns Creek (stream) and Market Street (Rt. 1004), follow Johns Creek downstream until its intersection with Craig Creek (stream), thence follow Craig Creek downstream to its intersection with Hawkins Lane (Rt. 614), thence follow Hawkins Lane westwardly to the intersection of Craigs Creek Road (Rt. 615), thence follow Craigs Creek Road northerly to the intersection of Peaceful Valley Road (Rt. 611), thence follow Peaceful Valley Road westwardly to its intersection with Paint Bank Road (Rt. 311), thence follow Paint Bank Road eastwardly to the junction of Johns Creek (stream), thence follow Johns Creek downstream until it intersects with Craig Creek (stream), the point of the beginning.

Craig Springs Precinct—Potts Mountain District

Beginning at the junction Paint Bank Road (Rt. 311) and of Peaceful Valley Road (Rt. 611) follow a straight-line path to Nimrod Road and Taylor Branch (stream) (Latitude: -80.20185, Longitude: 37.53150), thence follow Nimrod Road northeasterly to the intersection of Sweet Springs Turnpike, thence follow Sweet Springs Turnpike northerly (upslope) to the intersection of Potts Mountain Trail East, thence follow Potts Mountain Trail East southwesterly until it intersects Paint Bank Road (Rt. 311), thence follow Paint Bank Road northwesterly (downslope) to the junction of the 3,200 ft elevation contour on the north side of Potts Mountain, thence follow the 3,200 ft elevation contour southwesterly until it intersects the Craig-Monroe County (WV) boundary, thence follow the Craig-Monroe County (WV) boundary counter clockwise along the Potts Mountain ridgeline southwesterly to the Craig-Montgomery County boundary line, thence follow the Craig-Montgomery County boundary line southeasterly to the Johns Creek Mountain ridgeline, thence generally follow the Johns Creek Mountain ridgeline northeasterly to roughly the 2,300 foot elevation line at a location point (Latitude: -80.15044, Longitude: 37.48876) on the middle northern slope of John Creek Mountain, thence follow a straight-line northwesterly path to a stream drainage (Latitude: -80.15733, Longitude: 37.49457) on the lower northern slope of John Creek Mountain, thence a straight-line westwardly path to an adjacent stream drainage (Latitude: -80.15995, Longitude: 37.49453), thence follow stream drainage downstream until it intersects with Paint Bank Road (Rt. 311) (Latitude: -80.16004, Longitude: 37.49824), thence follow Paint Bank Road (Rt. 311) northwesterly to the junction of Peaceful Valley Road (Rt. 611), the point of the beginning.

Paint Bank Precinct—Potts Mountain District

Beginning at the junction of the 3,200 ft elevation contour on the north side of Potts Mountain and Paint Bank Road (Rt. 311), follow the 3,200 ft elevation contour southwesterly until it intersects the Craig-Monroe County (WV) boundary, thence follow the Craig-Monroe County (WV) boundary clockwise until it intersects with Craig-Alleghany-Monroe County (WV) boundary, thence follow the Craig-Alleghany County clockwise until it intersects Sweet Springs Turnpike at a location near the ridgeline (Latitude: -80.15469, Longitude: 37.60112), thence follow Sweet Springs Turnpike south until the intersection of Potts Mountain Trail East, thence follow Potts Mountain Trail East southwesterly until it intersects Paint Bank Road (Rt. 311), thence follow Paint Bank Road northwesterly downslope to the junction of the 3,200 ft elevation contour on the north side of Potts Mountain, the point of the beginning.

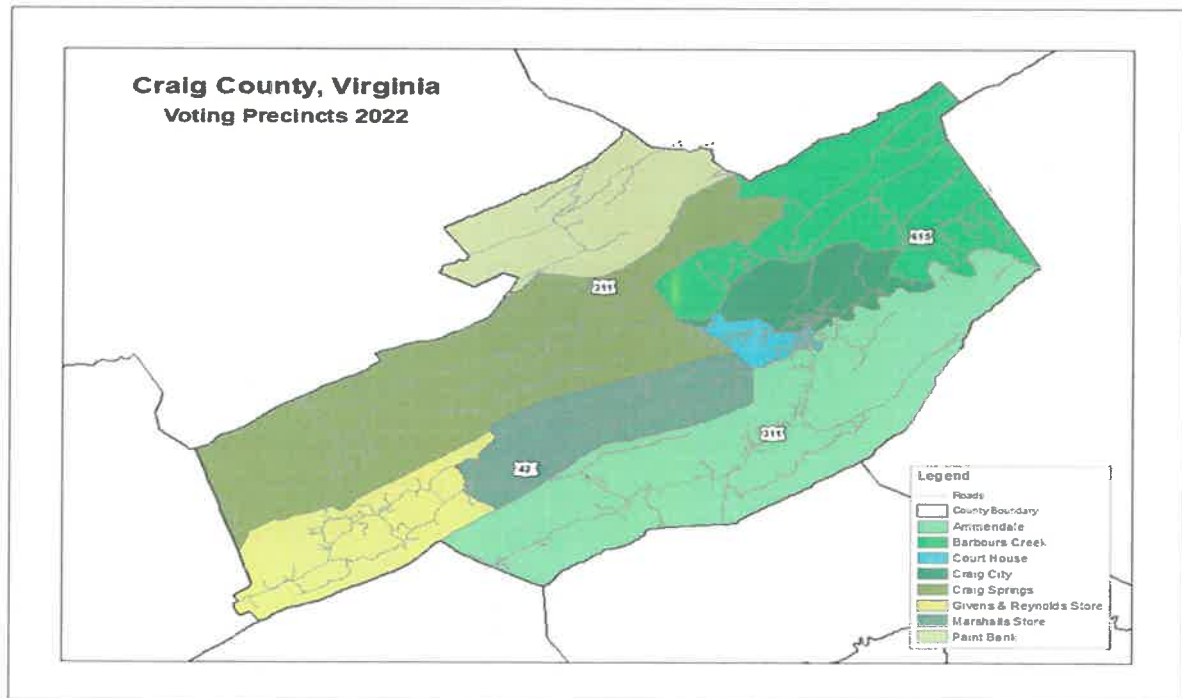
Barbours Creek Precinct—Potts Mountain District

Beginning at the junction Paint Bank Road (Rt. 311) and of Peaceful Valley Road (Rt. 611) follow a straight-line path to Nimrod Road and Taylor Branch (stream) (Latitude: -80.20185, Longitude: 37.53150), then follow Nimrod Road northeasterly to the intersection of Sweet Springs Turnpike, then follow Sweet Springs Turnpike northerly (upslope) at a location near the ridgeline (Latitude: -80.15469, Longitude: 37.60112), then follow the Craig-Alleghany County boundary clockwise until it intersects the Craig-Botetourt-Alleghany County boundary, then continue following the Craig-Botetourt County boundary southeasterly until it intersects Caldwell Mountain Road (Rt. 606), then follow Caldwell Mountain Road northwesterly (downslope) until it intersects Camp Easter Seals Road (Rt. 614), then follow Camp Easter Seals Road southwesterly to the intersection of Cedar Rush Rd (Rt. 614), then follow Cedar Rush Rd shortly to the intersection of a Craig Creek (stream), then follow the Craig Creek upstream until it intersects Hawkins Lane (Rt. 614), then follow Hawkins Lane westwardly to the intersection of Craigs Creek Road (Rt. 615), then follow Craigs Creek Road northerly to the intersection of Peaceful Valley Road (Rt. 611), then follow Peaceful Valley Road westwardly to its intersection with Paint Bank Road (Rt. 311), the point of the beginning.

(Ord. No. 01-05, § 7, 6-19-2001; Ord. No. 11-09, § 7, 7-7-2011, No. 04-23)

Sec. 18-33. Precinct boundary map.

That there is attached and made a part of the ordinance from which this chapter is derived a precinct boundary map depicting all precincts in the respective election districts.



(Ord. No. 01-05, § 8, 6-19-2001; Ord. No. 11-09, § 8, 7-7-2011, No. 04-23)

Sec. 18-34. Notification of adopted changes.

The general registrar of Craig County, Virginia shall, in accordance with Code of Virginia § 24.2-306, as amended, and all regulations of the Virginia Board of Elections, notify by mail of the adopted changes to all registered voters whose election district or polling place is changed at least 15 days prior to the next general, special or primary election.

(Ord. No. 11-09, § 9, 7-7-2011)